



SEMIDE

<http://www.semide.net>

Système Euro-
Méditerranéen
d'information sur les
savoir-faire dans le
domaine de l'Eau



EMWIS

<http://www.emwis.net>

Euro-Mediterranean
Information System
on know how in the
water sector

النظام الأوروبي - متوسطي للإعلام
حول المعرفة في ميدان المياه

**Towards a Mediterranean Water
Information Mechanism compatible
with the Water Information System
for Europe (WISE)**



EURO-MEDITERRANEAN PARTNERSHIP





Med-WIS & WISE harmonisation

- A targeted project 2007 of EC DG Env from the
 - Thematic Programme for Environment and sustainable management of Natural Resources, including energy (ENRTP)
 - Duration: Jan. 2008 – June 2009
 - Budget: 375 000 EUR covered by the EC, ES, FR and IT



Expected results

1. Increased accessibility and availability of water data
2. Interface between WISE and the Med Water Information Mechanism

Background (why EMWIS):

National Water Information Systems

Mediterranean Water observation mechanism

Network of national water authorities

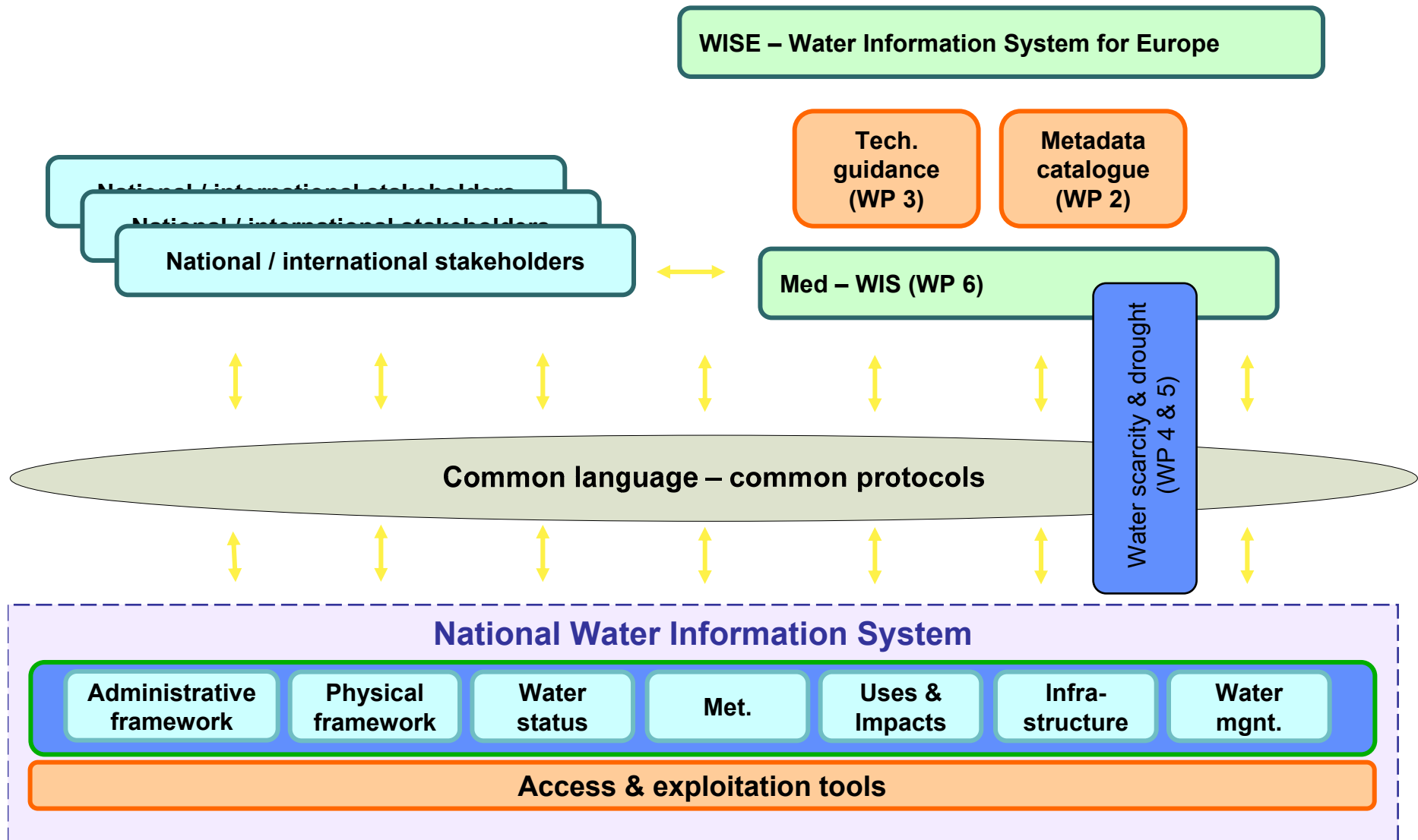


Main activities

1. Coordination
2. Developing a metadata catalogue of water information sources in Med Partner Countries
3. Drafting guidelines for setting up National water information systems compatible with WISE in Med Partner Countries
4. Preparation of a regional thematic report based on data collected
5. Support to Med Joint Process EUWI / WFD
 - Water Scarcity and Drought
 - Water Monitoring
6. Preparing a Mediterranean entry point to WISE
7. Dissemination



Overall principle





2. Setting up a Metadata catalogue

Metadata are necessary for discovery of services

- Review of existing tools
- Definition of reference labelling
 - Categories of data sources
 - Keywords
 - Geographical references
 - multilingualism
- Implementing the metadata catalogue
- Metadata collection with voluntary countries



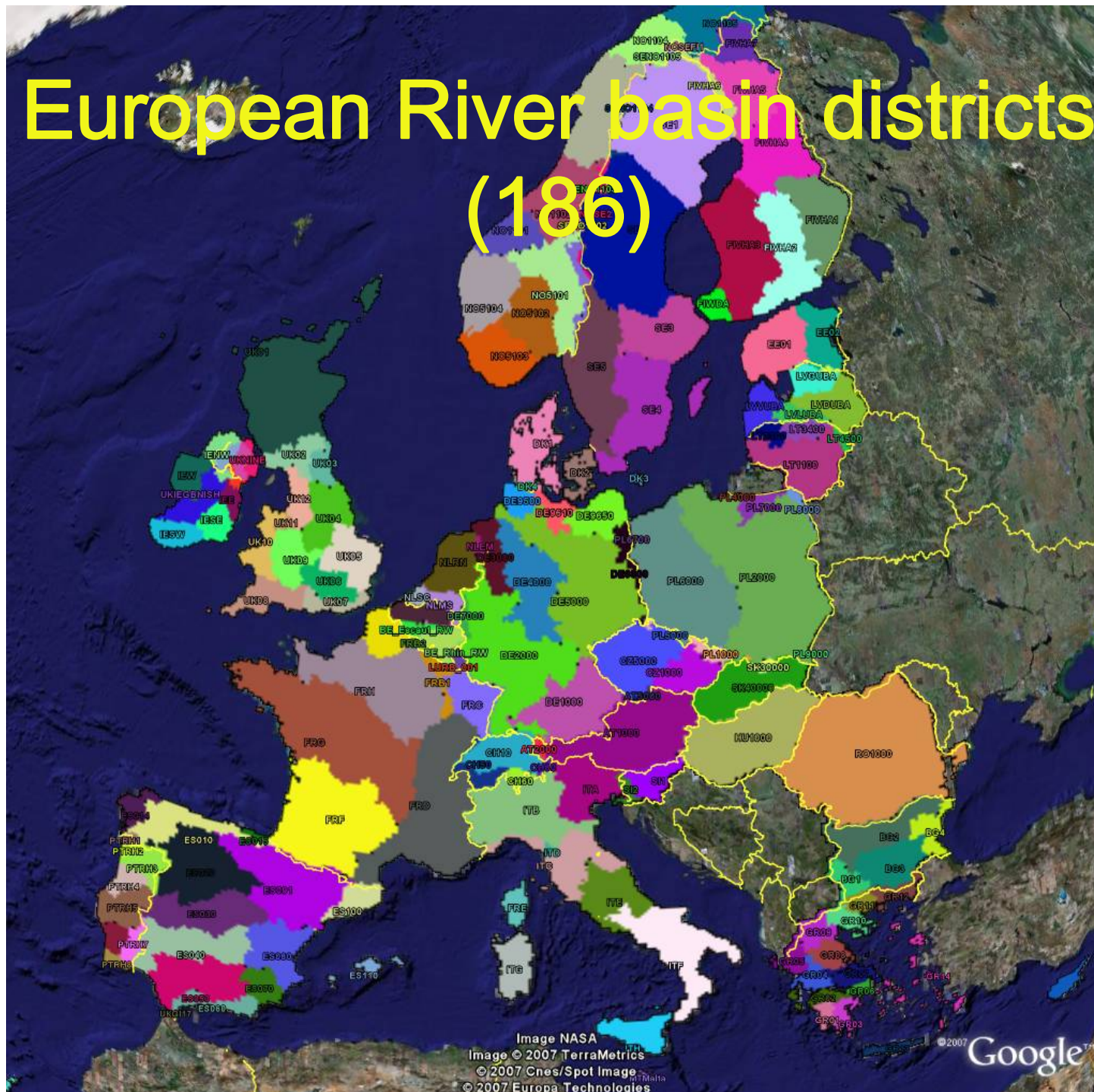
3. Guidance on WISE compatibility

- **Adapting existing EU guidance documents**
 - WISE GIS guidance documents, based on Inspire
 - WFD data sets
- **Common geographical rules**
 - Management units used by Med countries (e.g. administrative or hydrological)
- **Identification of potential open source software**

European River basin districts (186)



=> Similar definitions are required for Med Partner Countries





5. Collaboration with Med Joint Process

- **water scarcity and drought (WS-D)**
 - Availability of indicators / data items in MPC (survey)
 - Back to back meeting with EU WS-D (Oct'08)
 - Collection of metadata
 - Contribution to the preparation of “information products” (maps, data/indicators, briefing notes, etc.)
 - **water monitoring**
 - Survey of existing water monitoring networks in MPC
 - Quality and quantity
 - Review of EU WFD monitoring guidelines
 - Recommendations on potential improvements in monitoring activities
 - Collection of metadata
- => Identification of key experts & national representatives for both groups



4. Testing the production of a joint information product

- Theme selected: water scarcity & drought
- Agreement on common indicators
- Metadata collection and data sharing rules with 6 countries (incl. national workshops with stakeholders)
- Data collection on voluntary basis
- Analysis of data:
 - Preparation of online consultation and a briefing note
 - Recommendations for improving data management in this field

6. Adding a Mediterranean entry point to WISE



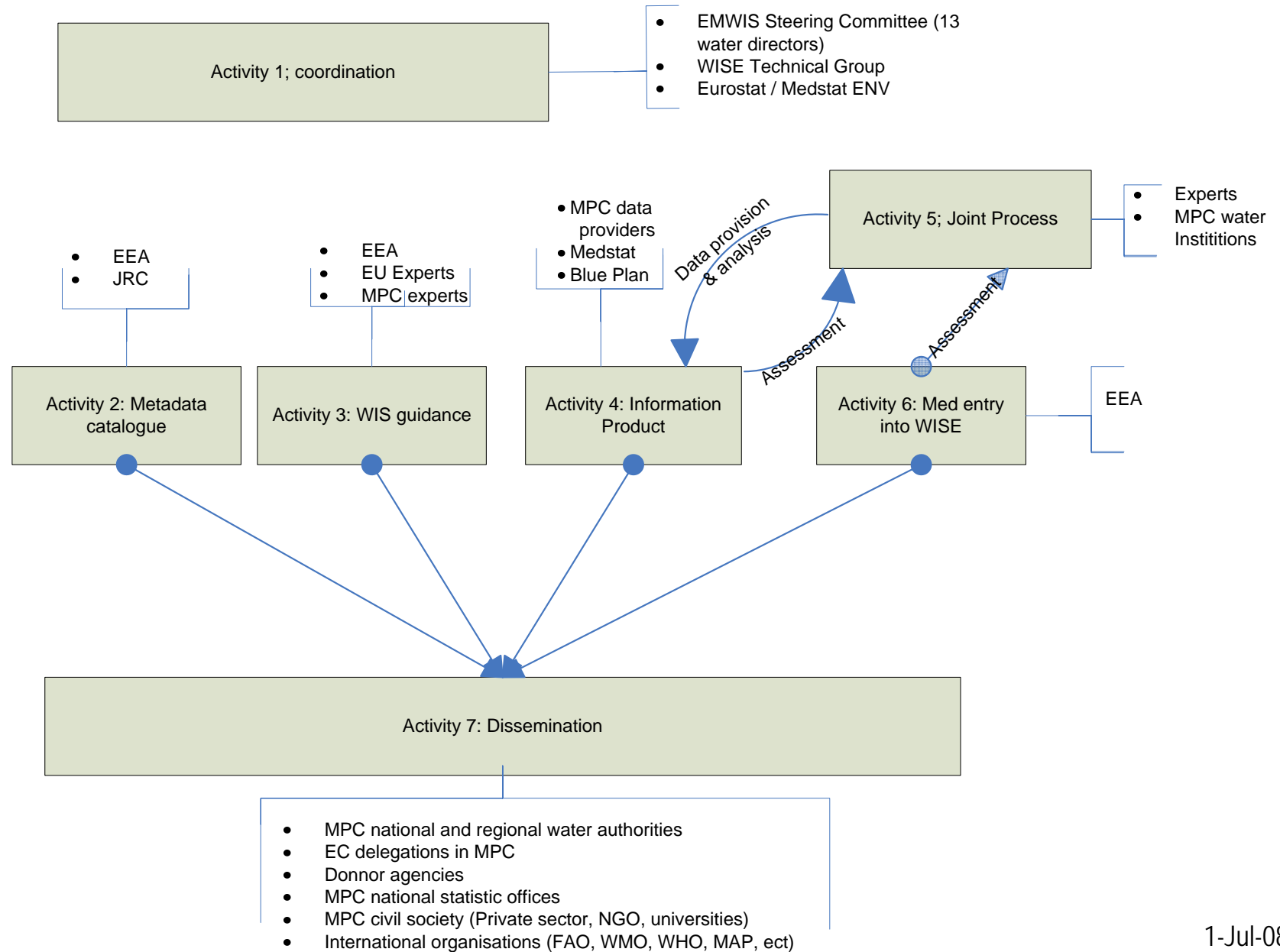
<http://water.europa.eu>

1. home page design Reviewing



2. Develop the structure for the Mediterranean as an example

Stakeholders





Questions

